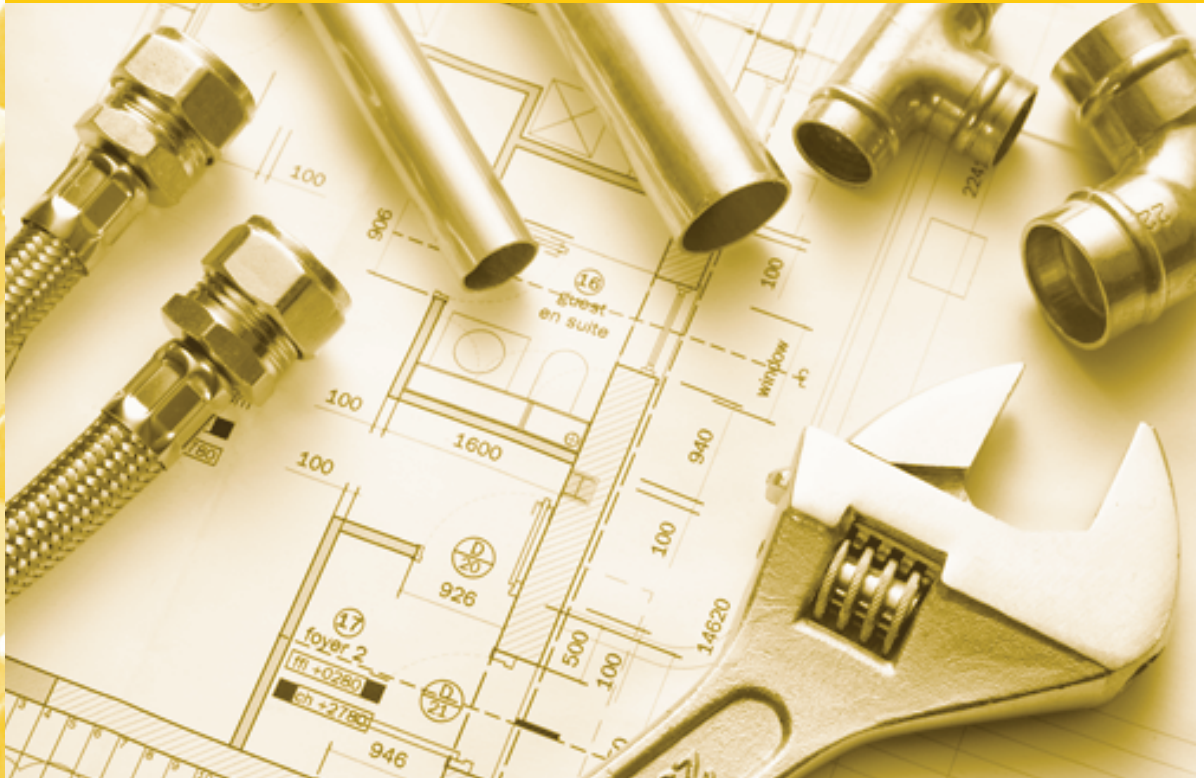




# PLUMBING PRODUCTS

Commercial and Residential



Trerice offers a variety of products ideally suited for the commercial and residential plumbing markets. Our Tridicators measure both temperature and pressure in hot water boilers. Gas and Water Test Gauges are important tools for passing building inspections. Low Pressure Gauges accurately measure pressures of 10 psi or less in applications such as natural gas. Trerice 800B Utility Gauges and Hydro-Therms are essential to plumbing contractors, providing excellent pressure and temperature measurement at an economical cost.

Since our beginning in 1923, it has been our objective to exceed our customer's needs. We welcome you to challenge Trerice to exceed your expectations, whether it is product application information, technical assistance or to schedule an on-site evaluation.

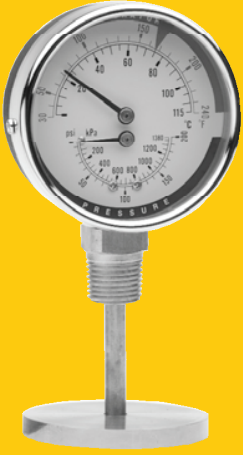
12950 W. Eight Mile Road • Oak Park • MI 48237-3288

Tel: 1.888.TRERICE • Fax: 1.248.399.7246

Website: [www.TRERICE.com](http://www.TRERICE.com) E-mail: [sales@TRERICE.com](mailto:sales@TRERICE.com)

# TRERICE PLUMBING PRODUCTS

## TRIDIGATOR



Trerice Tridicators are designed specifically for use with hot water boilers. Because Tridicators provide both temperature and pressure measurement, only one access point to the boiler is required. Available in 2 1/2" and 3 1/2" dial sizes with rear and bottom connections, there is a Trerice Tridicator to suit your needs.

SPECIFICATIONS	2 1/2" TRIDIGATOR	3 1/2" TRIDIGATOR
<b>Model</b>	140 2 1/2" Rear Connection 142 2 1/2" Rear Connection with lag	144 3 1/2" Bottom Connection 146 3 1/2" Rear Connection
<b>Dial Size</b>	2 1/2" (68mm)	3 1/2" (82mm)
<b>Wetted Parts</b>	Bronze tube, brass socket	Bronze tube, brass socket
<b>Connection</b>	1/4 NPT	1/2 NPT
<b>Case</b>	Steel, black painted	Steel, black painted
<b>Window</b>	Acrylic	Glass
<b>Pointers</b>	Steel, black painted	Steel, black painted
<b>Ring</b>	Plastic, screwed on	Steel
<b>Temperature Accuracy</b>	3%, Full Scale Grade B	3%, Full Scale Grade B
<b>Pressure Accuracy</b>	3-2-3%, Grade B	3-2-3%, Grade B
<b>Maximum Operating Pressure</b>	2/3 of full scale range	2/3 of full scale range
<b>Approximate Shipping Weight</b>	0.3 lbs. (0.14 kg)	0.55 lbs. (0.25 kg)

Part Number	Dial Size	Connection	Range
PTC14001	2 1/2" (68mm)	1/4 NPT Rear	30° to 240° F/C & 0 to 75 psi/kPa
PTC14007	2 1/2" (68mm)	1/4 NPT Rear	60° to 320° F/C & 0 to 75 psi/kPa
PTC14201	2 1/2" (68mm)	1/4 NPT Rear w/lag	30° to 240° F/C & 0 to 75 psi/kPa
PTC14401	3 1/2" (82mm)	1/2 NPT Bottom	30° to 240° F/C & 0 to 75 psi/kPa
PTC14403	3 1/2" (82mm)	1/2 NPT Bottom	30° to 240° F/C & 0 to 100 psi/kPa
PTC14405	3 1/2" (82mm)	1/2 NPT Bottom	30° to 240° F/C & 0 to 200 psi/kPa
PTC14601	3 1/2" (82mm)	1/2 NPT Rear	30° to 240° F/C & 0 to 75 psi/kPa
PTC14603	3 1/2" (82mm)	1/2 NPT Rear	30° to 240° F/C & 0 to 100 psi/kPa
PTC14605	3 1/2" (82mm)	1/2 NPT Rear	30° to 240° F/C & 0 to 200 psi/kPa

## HYDRO-THERM



The Trerice Hydro-Therm is the ideal instrument for measurement of hot or chilled water in hydronic systems. The blue, organic "spirit" fill is easily read without the environmental concerns of mercury. The sturdy Valox® case is available in rigid straight and rigid 90° angle configurations. The 2" stem makes this the perfect instrument for smaller pipeline applications. A 1/2 NPT brass thermowell is included.

SPECIFICATIONS	HYDRD-THERM
<b>Model</b>	HT30 Rigid Straight HT31 Rigid 90° Angle
<b>Scale Size</b>	5 1/2"
<b>Case</b>	Valox®
<b>Stem</b>	Brass
<b>Connection</b>	1/2 NPT brass thermowell (included)
<b>Window</b>	Acrylic
<b>Tube</b>	Lens front, magnifying type
<b>Scale</b>	Aluminum, white background with black graduations and markings
<b>Top Plate</b>	ABS
<b>Accuracy</b>	2%
<b>Approximate Shipping Weight</b>	0.5 lbs. (0.23 kg)

Part Number	Case Configuration	Range	Figure Intervals	Minor Division
HT3041	Rigid Straight	-40° to 110 F/C	20° F / 10° C	2° F / 1° C
HT3047	Rigid Straight	30° to 240 F/C	20° F / 20° C	2° F / 2° C
HT3141	Rigid 90° Angle	-40° to 110 F/C	20° F / 10° C	2° F / 1° C
HT3147	Rigid 90° Angle	30° to 240 F/C	20° F / 20° C	2° F / 2° C

# TRERICE PLUMBING PRODUCTS

## GAS & WATER TEST GAUGES



Trerice Gas and Water Test Gauges are integral tools for passing building inspections. Once the system has been pressurized, any leaks are visible as a pressure drop on the dial of the Gas Test Gauge. The Water Test Gauge has a 3/4 NPT hose bib connection mounted at 12 o'clock for easy viewing and accurately measures in-line water pressure. A maximum register pointer is available on either gauge having a dial range of 60 psi or greater.

SPECIFICATIONS	GAS TEST GAUGE	WATER TEST GAUGE
<b>Model</b>	120 Gas Test Gauge	122 Water Test Gauge
<b>Dial Size</b>	2" (50mm)	2 1/2" (63mm)
<b>Wetted Parts</b>	Bronze tube, brass socket	Bronze tube, brass socket
<b>Connection</b>	3/4 NPT female	3/4 NPT female hose-bib connection, 12 o'clock mount
<b>Case</b>	Steel, black painted	Steel, black painted
<b>Window</b>	Acrylic	Acrylic
<b>Pointer</b>	Steel, black painted	Steel, black painted
<b>Ring</b>	Steel, black painted	Steel, black painted
<b>Accuracy</b>	3-2-3%, Grade B	3-2-3%, Grade B
<b>Maximum Temperature</b>	150° F (65° C)	150° F (65° C)
<b>Approximate Shipping Weight</b>	0.6 lbs. (0.27 kg)	0.4 lbs. (0.18 kg)

Gas Test Gauge Part Number *	Water Test Gauge Part Number *	Range
PGT12010	-	0 to 15 psi
PGT120190	-	0 to 15 psi/kPa
PGT120191	-	0 to 30 psi/kPa
PGT120192	-	0 to 60 psi/kPa
PGT120193	-	0 to 100 psi/kPa
-	PWT122194	0 to 160 psi/kPa
-	PWT122196	0 to 300 psi/kPa

\* Add MAX to any part number for Maximum Registering Pointer. (60 psi and greater only)  
Example: PGT120192MAX

## LOW PRESSURE GAUGE



Trerice Low Pressure Gauges are essential for accurately measuring low pressures such as natural gas. This gauge employs a diaphragm capsule element to accurately measure pressures of 10 psi or below. The case is drawn steel with brass wetted parts.

SPECIFICATIONS	LOW PRESSURE GAUGE	Part Number	Range
<b>Model</b>	162 Low Pressure Gauge	PLP16201	0 to 15" H <sub>2</sub> O
<b>Dial Size</b>	2 1/2" (63mm)	PLP16203	0 to 60" H <sub>2</sub> O
<b>Wetted Parts</b>	Brass diaphragm capsule and socket	PLP16204	0 to 100" H <sub>2</sub> O
<b>Movement</b>	Brass	PLP16211	0 to 20 oz/in <sup>2</sup> / 34" H <sub>2</sub> O
<b>Connection</b>	Lower male, 1/4 NPT	PLP16221	0 to 3 psi
<b>Case</b>	Steel, black painted	PLP16222	0 to 5 psi
<b>Window</b>	Polycarbonate, snap-in		
<b>Pointer</b>	Steel, blank painted		
<b>Dial Face</b>	Aluminum, white background with black graduations and markings		
<b>Accuracy</b>	2% Grade B		
<b>Maximum Temperature</b>	140° F (60° C)		
<b>Approx. Shipping Weight</b>	0.5 lbs. (0.23kg)		

# TRERICE PLUMBING PRODUCTS

## 800B UTILITY GAUGE



The Trerice 800B Utility Gauge is designed for general pressure indication requirements. This gauge provides excellent accuracy (1.6% full scale) and reliability at an economical cost. The case is drawn steel and wetted parts are brass.

SPECIFICATIONS	800B UTILITY GAUGE	
<b>Model</b>	<b>800B</b>	
<b>Dial Sizes</b>	1 1/2" (40mm), 2" (50mm), 2 1/2" (63mm), 4" (100mm)	
<b>Wetted Parts</b>	Bronze tube, brass socket	
<b>Movement</b>	Brass	
<b>Connection</b>	1/8 NPT (not available with 4" dial size) 1/4 NPT (not available with 1 1/2" dial size)	
<b>Case</b>	Drawn steel, black finished, stem-mounted flangeless	
<b>Window</b>	Acrylic	
<b>Pointer</b>	Steel, black painted	
<b>Dial Face</b>	Aluminum, white background with black graduations and markings	
<b>Accuracy</b>	1.6% Full Scale	
<b>Maximum Temperature</b>	180° F (82° C)	
<b>Approximate Shipping Weight</b>	1 1/2": 0.2 lbs. (0.09 kg)	2": 0.3 lbs. (0.14 kg)
	2 1/2": 0.3 lbs. (0.14 kg)	4": 0.6 lbs. (0.27 kg)

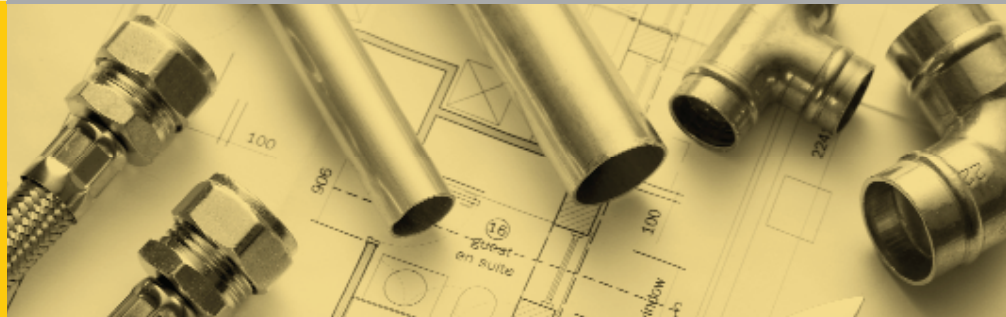
### How To Order

Model	Dial Size	Connection Size	Connection Location	Units of Measure	Range Code
800B	15 1 1/2"	01 1/8 NPT	L Lower	A psi	See Range Table
	20 2"	02 1/4 NPT	B Back	D psi/kPa	
	25 2 1/2"				
	40 4"				

Range Codes	Specific Ranges
010	30" Hg to 0
020	30" Hg to 15 psi
030	30" Hg to 30 psi
040	30" Hg to 60 psi
050	30" Hg to 100 psi
060	30" Hg to 150 psi
070	30" Hg to 300 psi

Range Codes	Specific Ranges
080	0 to 15 psi
090	0 to 30 psi
100	0 to 60 psi
110	0 to 100 psi
120	0 to 150 psi
130	0 to 200 psi
140	0 to 300 psi

Range Codes	Specific Ranges
150	0 to 400 psi
160	0 to 600 psi
180	0 to 1000 psi
190	0 to 1500 psi
200	0 to 2000 psi
210	0 to 3000 psi
220	0 to 5000 psi



12950 W. Eight Mile Road • Oak Park • MI 48237-3288

Tel: 1.888.TRERICE • Fax: 1.248.399.7246

Website: [www.TRERICE.com](http://www.TRERICE.com) E-mail: [sales@TRERICE.com](mailto:sales@TRERICE.com)